

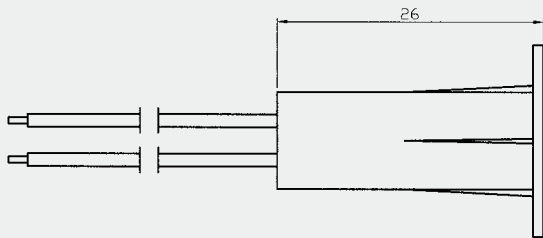
**Specification: BR-1018**

- \* Flanged recessed switch
- \* 3/8" diameter press to fit
- \* Standard 18" #22AWG leads
- \* Special wire available
- \* Switch and Magnet available seperately
- \* Resistor, Diode and Supervisory Loop available on request
- \* Colors: White, Brown, Grey

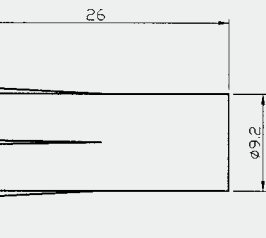
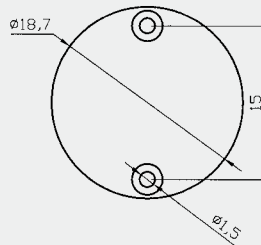
... Recessed Mounted



**Dimension (mm):**



**SWITCH**



**MAGNET**

**Order Information:**

| Part Number | Loop Type     | Reed Form | Closed Gap [Inch(mm)] (Ohm) | Depature Gap [Inch(mm)] (W) | Maximum Initial Contact Resistance (VDC/VAC) | Maximum Contact Rating (A) | Maximum Switching Voltage | Maximum Switching Current |
|-------------|---------------|-----------|-----------------------------|-----------------------------|--|----------------------------|---------------------------|---------------------------|
| BR-1018     | Closed        | N/O       | 3/4 (19)                    | 0.78 (22)                   | 0.150  | 10                         | 100                       | 0.5                       |
| BR-1018WG   | Closed        | N/O       | 1 (25)                      |                             | 0.150  | 10                         | 100                       | 0.5                       |
| BR-1018A    | Open          | N/C       | 3/4 (19)                    |                             | 0.150  | 3                          | 30                        | 0.2                       |
| BR-1018C    | Closed & Open | SPDT      | 3/4 (19)                    |                             | 0.150  | 3                          | 30                        | 0.2                       |

